



JKU Topliner Bill of Materials

2	Front Topliner panels	2	#4 Adhesive sheets Inner freedom panels	2	#9 Adhesive sheets Side windows
1	Rear Topliner panel	8	#5 Adhesive sheets 8x2	2	#10 Adhesive sheets Rear window sides
2	#1 Adhesive sheets center of freedom panels	10	#6 Adhesive sheets 12x2	1	#11 Adhesive sheet Rear window center
2	#2 Adhesive sheets Outer freedom panels	12	#7 Adhesive sheets 13x3.25	2	Door moldings
2	#3 Adhesive sheets Front freedom panels	2	#8 Adhesive sheets - wishbones		

Tools Needed

< Razor blade >< Scissors >< T40 Torx >< 10mm socket or wrench >< Flathead Screwdriver >

Before you begin make sure the top is clean and free of mud, dirt or oil. Failure to do this will cause the adhesive to fail.

The minimum recommend temperature to apply the adhesive is 65 degrees.

1. Remove the front freedom panels by unlocking the four hold down latches and turn knob. **Fig. A**
2. Using a T40 torx remove the two bolts holding the front corners of the top in place. **Fig. B**
3. Using a T40 torx remove the six bolts holding the rear hardtop in place. **Fig. C**
4. Remove the washer cover by pulling straight out. **Fig. D**
5. Remove the harness and washer line from the motor. **Fig. E**
6. Using a flathead screwdriver disconnect the defroster line on the drivers and passengers sides of the window. **Fig. F**

7. Disconnect the plug and washer line from the junction box. **Fig. G**
8. Disconnect the shocks from the hardtop using a flathead screwdriver. **Fig. H**
9. Remove the four 10mm bolts holding the rear window to the hardtop. **Fig. I**
10. Set the glass aside in a safe place to prevent damage to the glass. **Fig. J**
11. Remove the factory hard top. **Fig. K**
12. Lay the hard top onto a soft surface face down. **Fig. L**
13. Pull straight out on the control box to gain access to the plug and washer line. **Fig. M**
14. Using a small flathead screwdriver remove the plug from the control box. **Fig. N**
15. Using a flathead screwdriver remove the washer line. **Fig. O**
16. Using the T40 torx remove the turn knobs from the freedom panels. **Fig. P**
17. Check fit all the Topliner panels before attaching the adhesive sheets. **Fig. Q**
18. Using the attached diagram separate and do an inventory count on the adhesive sheets. **Fig. R**
19. Using the attached diagram peel the clear plastic side of the adhesive sheet and attach firmly to the top. **Fig. S**
20. Using the attached diagram peel the clear plastic side of the adhesive sheet and attach firmly to the top. **Fig. T**
21. Working in small areas peel off the paper backing to expose the adhesive once the backing is removed firmly press the Topliner into place. **Fig. U**

22. Allow the Topliner to settle in place for 30min to an hour before reinstalling the top. **Fig. V**
23. Roll the trim over the door edge and Topliner to lock the material in place. **Fig. W**
24. Attach the knobs using a T40 torx bit in the same locations that they were removed. **Fig. X**
25. Attach the plug, washer line and control box to the factory location. **Fig. Y**
26. Allow the Topliner to settle in place for 30min to an hour before reinstalling the top. **Fig. Z**
27. Reinstall the rear glass using the four factory 10mm bolts. **Fig. AA**
28. Reinstall the factory shocks to the mounting post. **Fig. BB**
29. Attach the factory harness, washer line and trim cover. **Fig. CC**
30. Reattach the defroster buttons to the glass. **Fig. DD**
31. Press the trim into its factory location. **Fig. EE**
32. Reattach the harness and washer line to the control box. **Fig. FF**
33. Tighten the factory hardtop in the reverse order. **Fig. GG**

Care and Cleaning: For loose dirt vacuum as needed, heavy dirt and debris may require a carpet cleaner per the manufacture's specifications

Warranty: 1 Year from delivery for manufacture defects

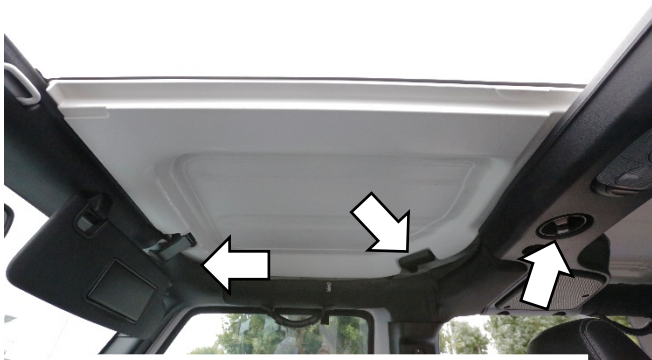


Fig. A



Fig. B



Fig. C

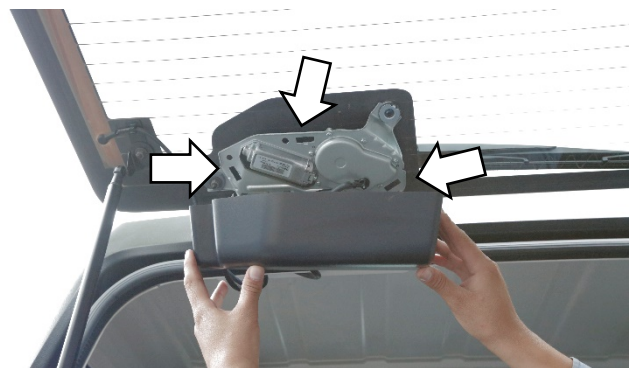


Fig. D



Fig. E



Fig. F

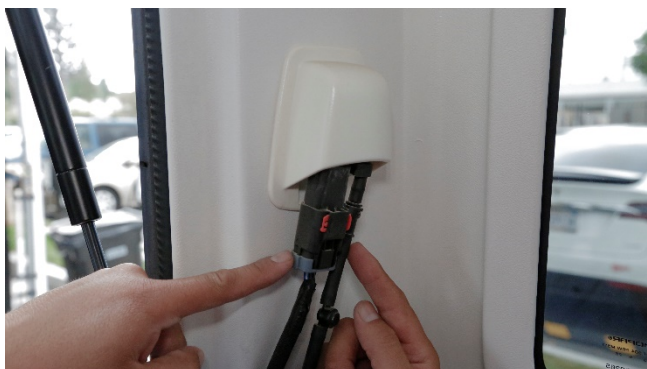


Fig. G



Fig. H



Fig. I



Fig. J



Fig. K



Fig. L



Fig. M



Fig. N



Fig. O



Fig. P

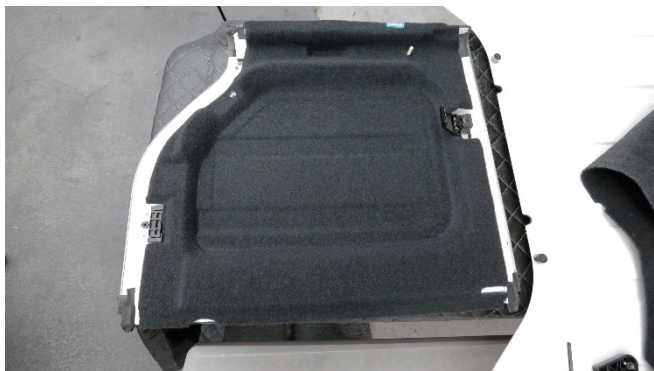


Fig. Q



Fig. R



Fig. S

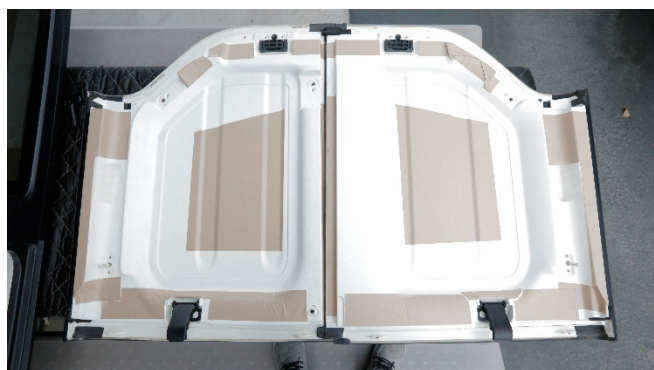


Fig. T



Fig. U



Fig. V



Fig. W



Fig. X



Fig. Y

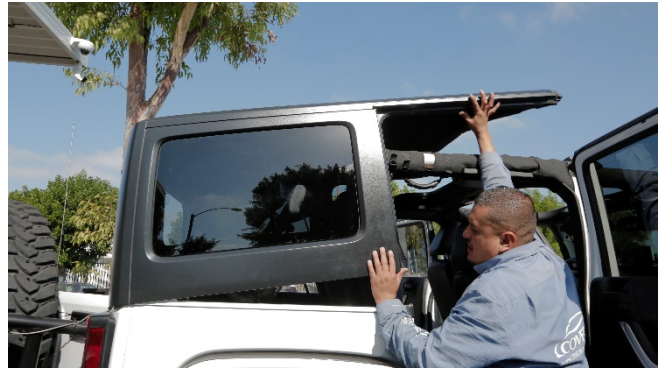


Fig. Z



Fig. AA



Fig. BB

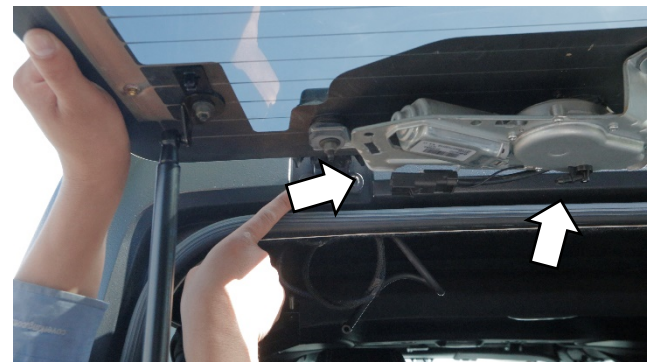


Fig. CC



Fig. DD

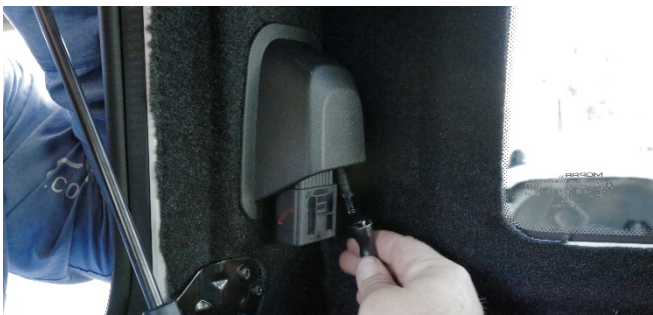


Fig. EE



Fig. FF

